



DIY Kitchen Planner

What to find in the Shape Supplies DIY Kitchen Planner?

Forms

- Benchtop Order Form (Form 1)
- Cabinets/Carcasses Order Form (Form 2)
- Cut List Order Form for Panels, Fillers and Kick Fronts (Form 3)
- Graph paper for your kitchen plans

OVERVIEW

Most joinery products such as Kitchens, Vanities and Wardrobes consist of three major product types. They are:

- Benchtops
- Whiteboard
- Decorative Board

Benchtops come in two major types:

- High Pressure Laminate (HPL)
- Stone

There are other benchtop options on the market however the two types that we sell are the industries most popular and reliable. They also come in a range of different styles, thicknesses, colours and finishes.

Whiteboard or WHMR as it is called is a 16mm high moisture resistant melamine particle board and it is used to construct the cabinets (carcasses) of a kitchen.

Decorative Board is used to complete the style or design of your project. It comes in a range of styles, colours and finishes.

To find out more about decorative panels and benchtops you can visit the Shape Supplies Showroom located at 5 / 229 Robinson Road East, Geebung. Our office hours are:

Monday - Friday 8.00am to 4.00pm and Saturday - 8.00am to 2.00pm.

Or view our supplier websites by following the link below:

www.polytec.com.au

www.laminex.com.au

www.formica.com.au

If you find colours that interest you; contact us via email sales@shapesupplies.com.au or by phone (07) 3865 7056 and we can send those selected colour samples to you in the mail.

GETTING STARTED

Step 1 – Drawing your benchtop:

The best way to begin converting your project into a detailed list or plan for each of the three major product types is to draw a plan. Use your graph paper and from an aerial view begin with the benchtop.

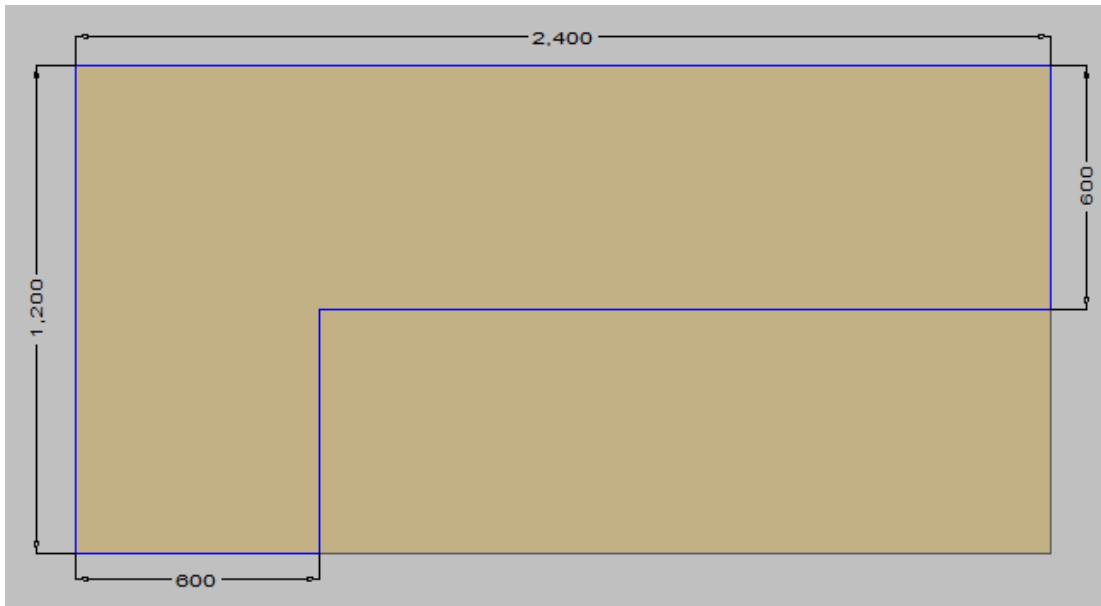


Illustration 1 - Draw the basic shape and assign critical sizes (as shown). Be sure to measure the room/space at benchtop height – generally between 900-910mm off the floor.

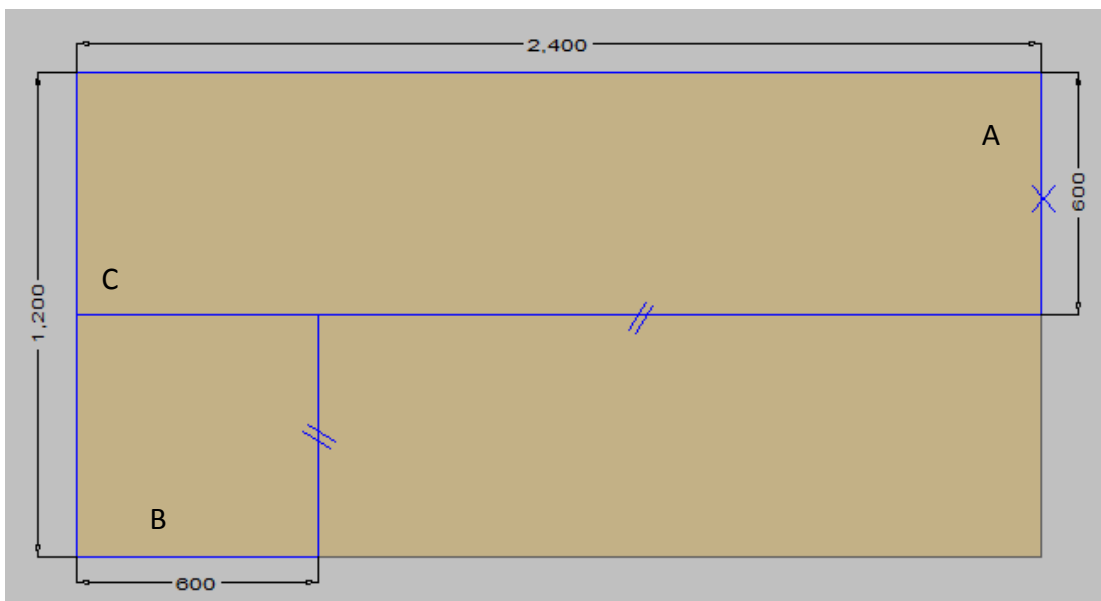


Illustration 2 - When ordering a benchtop, convert your plan to the benchtop order form (Form1) provided and indicate any of the following:

- Where any joins may be (mason mitres)
- What edges are to be post formed (rolled edge), laminated or left raw.

Please refer to our order form 1 for the key of what symbols indicate.

In **Illustration 2 – A** the right end has been marked 'X' which indicates a laminated end as that area of the benchtop would be in sight so should not be left raw. In **Illustration 2 – B** is covered on the return end by either a wall or tall panel (i.e. fridge panel) so it is able to stay raw as it is out of sight.

Illustration 2 – C has a joint marked running parallel with long side (known as a mason mitre)

Things to consider

- The order form attached is designed for HPL tops. The form can be used for stone tops although a different procedure is required when ordering.
- Benchtop thickness, colour and finish.
- Cut outs for sinks, stove tops and wall recesses are required to be done by the installer onsite.

Step 2 – Decorative Panels

Returning to your graph paper we will now move on to the decorative panels. These include:

- End panels (gables)
- Fillers
- Kick fronts
- Doors and drawer fronts.

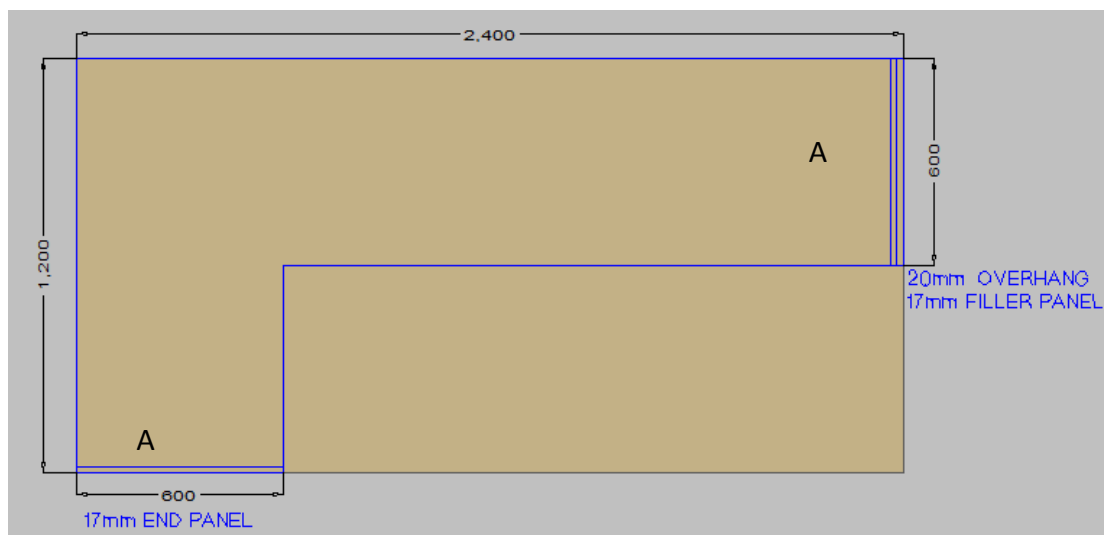


Illustration 3 - To begin, work inward from either end of your benchtop. Consider the overhang you require then allow 17mm for board thickness and draw two lines that run the full depth of benchtop – as per

Illustration 3 - A

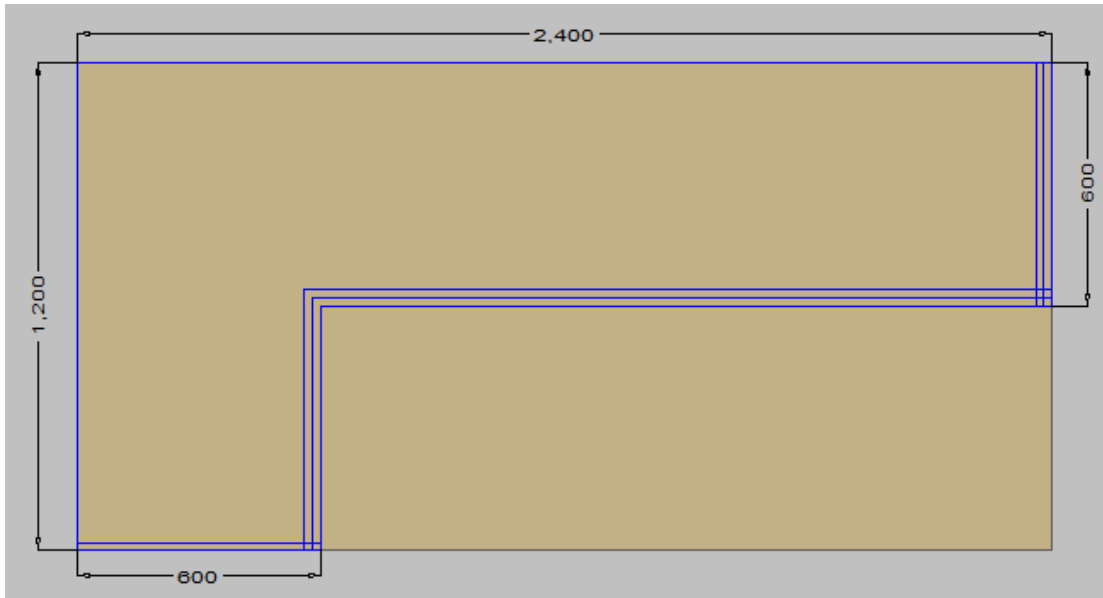


Illustration 4 – Decorative Panels - We have added the doors and drawer fronts by coming in 20mm from the leading edge (overhang) then another 20mm for the Door and Drawer Front thickness. It is 20mm because even though the board is normally 16mm thick all hinges require 3 -4mm of clearance off the front of the WHMR cabinet.

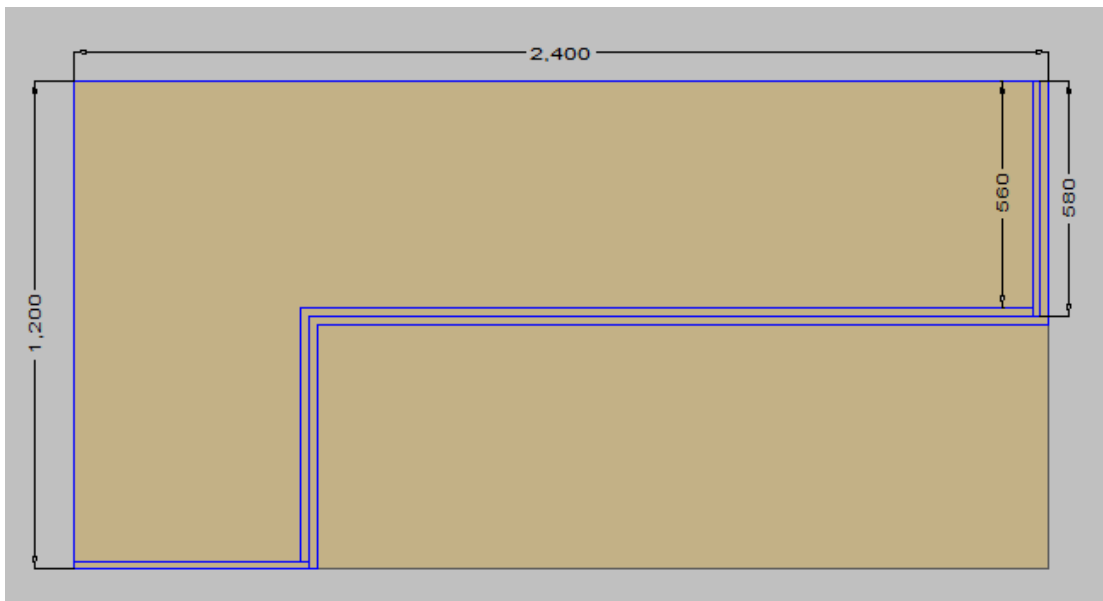


Illustration 5 – Decorative Panels - As you can see in Illustration 5 we have trimmed edges to accurately show the end gable running from the front of the doors/ drawer front back to the wall. This plan also demonstrates the depth back to the wall from the front of the carcass. Our standard carcass depth is 550mm. We allow a 10mm void between the wall and the back of the WHMR carcass for easy installation.

You now have a basic outline of your benchtop and the decorative panels required.

Step 3 – WHMR Cabinets

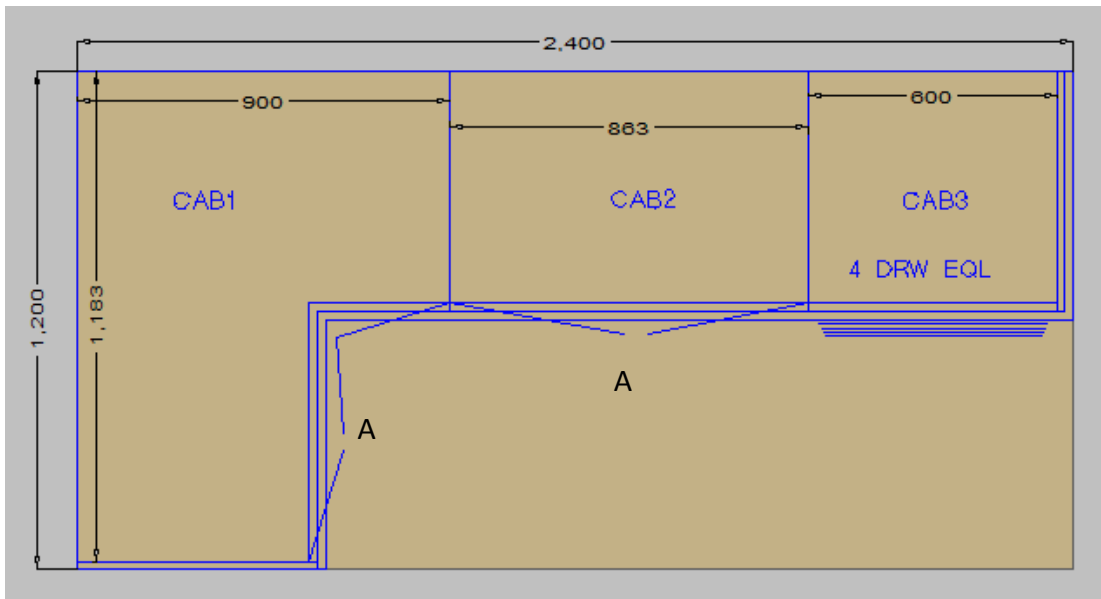


Illustration 6 – WHMR Cabinets - The next step is to divide the space into your required cabinets. You can also give each cabinet a number and indicate door opening direction and drawer detail – as shown in **Illustration 6A**.

You have now completed the first Plan – The layout.

You have all the information regarding the widths and depths of the overall project and of each individual cabinet.

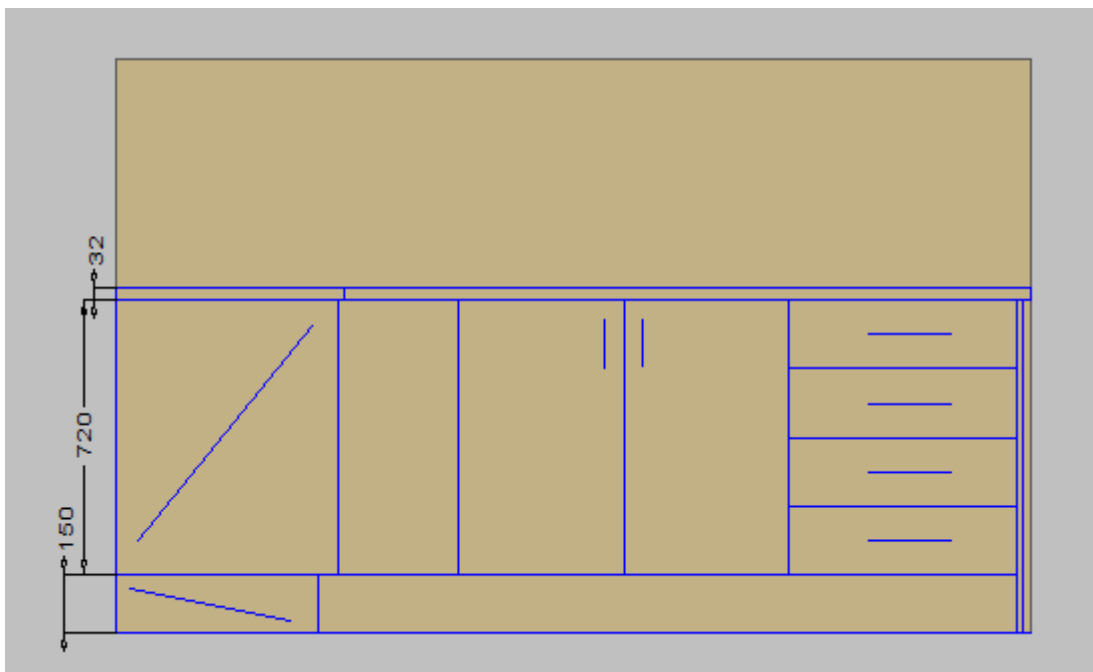


Illustration 7 – Ground Elevation - What we need now is heights.

Illustration 7 is drawn from the perspective as if you were facing the cabinets. We call it a ground elevation. As you can see it provides the opportunity to illustrate your joinery heights.

Step 4 – Order Forms

Now it is time to use the order forms by using the information you have gathered on your plans.

Benchtop Order Form (Form 1)

- Leave the top section blank for a Shape Supplies staff member to complete – this includes date, order #, date req and contact person.
- Fill in your benchtop colour, profile, and finish – **LEAVE THE SUPPLIER SECTION BLANK**
- Convert your benchtop plan to order form and return to Shape Supplies

Cabinets/Carcasses Order Form (Form 2)

We will start with our WHMR cabinets. Begin by filling out your contact details at the top of the page.

Moving onto **column one** write a name for cabinet 1 - Is it:

- A base unit?
- A wall unit?
- A drawer unit?
- A pantry unit?
- How many doors does it have?
- What is the drawer splits? (ie – 4 equal or 1 small 2 big).

Example: For cabinet one in the above example we would call it a 3 Door Corner Unit.

Column two is the cabinet number - #1.

Column three, four and five are the height, width and depth respectively. **Column six and seven** only apply to corner units as they need extra dimensions – refer to the plan at the bottom of the **Cabinets/Carcasses Order Form (Form 2)**.

Ours would look like this - 720 X 890 x 1173 x 550 x 550 (note 10mm void). Cabinet 2 would be – 720 x 863 x 550. **Column eight** indicates the hinge detail for each individual box. **Column nine** – the shelving detail and **Column ten** all other notes.

The last two columns relate to the extra products that go with the WHMR cabinets. Doors and Drawer Fronts – by writing ‘yes’ in column 11 you will automatically receive the doors and drawer fronts bored ready for assembly. Please note all gaps and clearances have already been calculated for you.

The last column is for hardware. Basic hardware packs consist of hinges, drawer sides and runners, adjustable feet, shelf supports, and screws. We only use top quality, reputable suppliers that provide excellent warranties. By writing yes in this box we will automatically supply and bore for all the basic hardware requirements. To find out more about the hardware we supply please contact the office.

Cut List Order Form for Panels, Fillers and Kick Fronts (Form 3)

Once you have completed filling in the details for the cabinets it is time to move onto ordering your doors and panels **Cut List Order Form for Panels, Fillers and Kick Fronts (Form 3)**. Again fill out your contact details at the top of the page then provide the material detail, colour finish, supplier, etc.

The chart is fairly straight forward. The only thing to be mind full of is the edge detail. The codes stand for; Edge 1 Long, Edge 1 Short, Edge 2 Long, Edge 2 Short respectively and this relates to what edges need a 1 or 2mm edge strip on them. There is space to put a box number or a note for the panel which will then be transferred on to the labels when it comes to production providing you a clear description of what each panel is for.

That's it!

If you can follow these instructions and with our support you are now ready to tackle all those joinery projects you have at home or for your investment property. Whether it be a new kitchen, bathroom, wardrobes or just some storage solutions, its custom made, quality materials and it's easy once you know how.

If you have more technical questions you can email our team at sales@shapesupplies.com.au and we'd be happy to help.

If you need assistance with your design and measure please don't hesitate to ask! Another service we offer is to have our highly qualified kitchen designer with over 30 years experience make an appointment to see you. To find out more contact the office.



BENCH TOP FORM (Form 1)

Delivery Address: Unit 5 / 229 Robinson Road East

Suburb: Geebung

State: QLD

Postcode: 4034

Telephone: 07 3865 7056 **Fax:** 0738657551

Date:.....

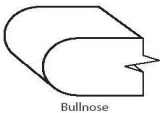
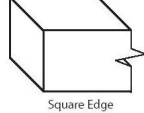
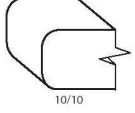
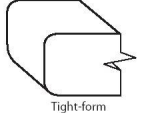
Email: sales@shapesupplies.com.au

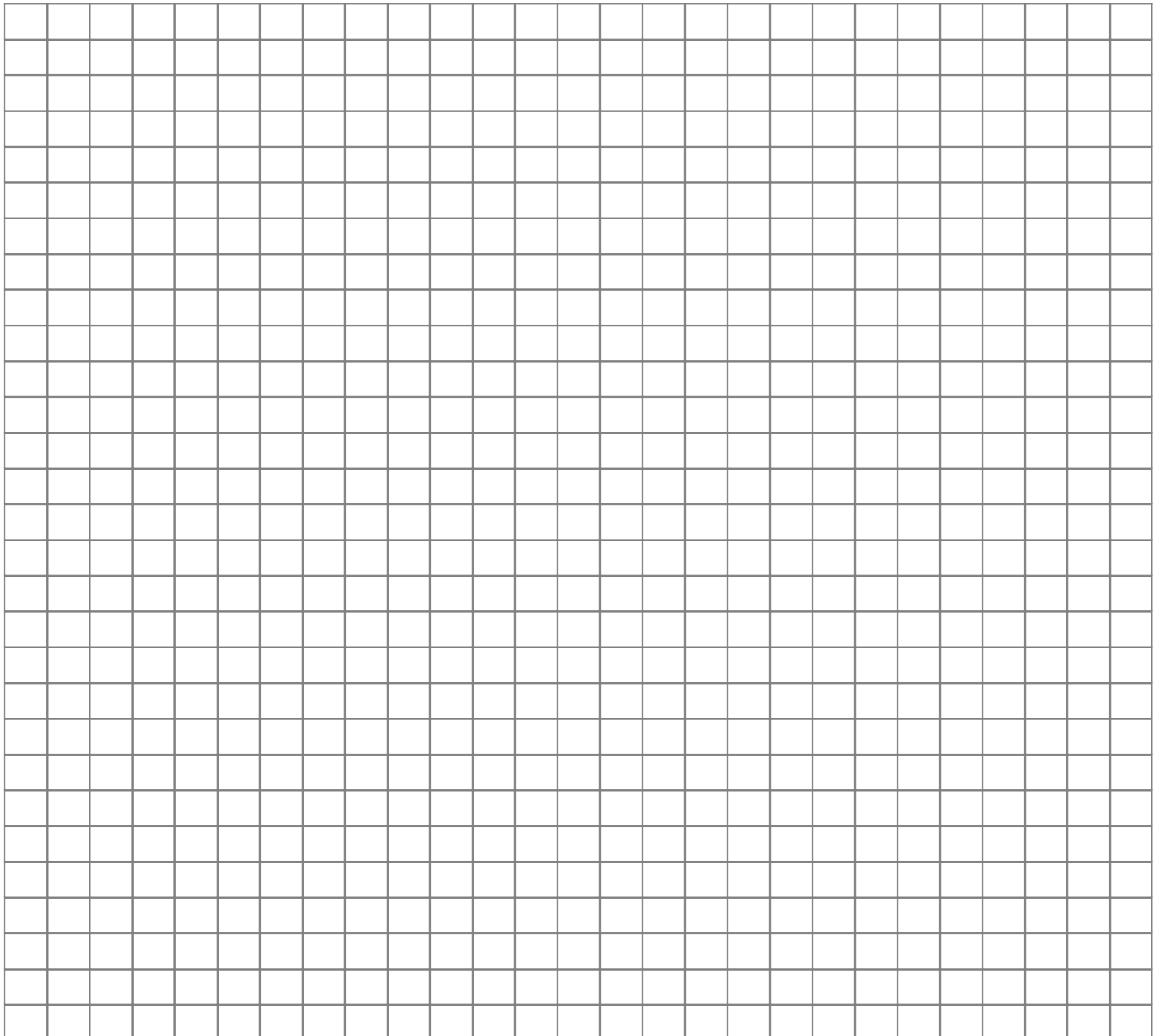
Order #:.....

Customer Ref:.....

Contact Person:.....

Date Req:.....

<p>Bench Top Colour:</p> <p>Supplier:</p> <p>PLUS choose ONE of the following FINISHED:</p> <p><input type="checkbox"/> Texture <input type="checkbox"/> Matt <input type="checkbox"/> Gloss <input type="checkbox"/> Etch</p>	<p>Bench Top Profile: Please choose ONE of the following:</p> <div style="display: flex; justify-content: space-around; align-items: flex-end;"> <div style="text-align: center;">  <small>Bullnose</small> </div> <div style="text-align: center;">  <small>Square Edge</small> </div> <div style="text-align: center;">  <small>10/10</small> </div> <div style="text-align: center;">  <small>Tight-form</small> </div> </div> <p><input type="checkbox"/> Bullnose <input type="checkbox"/> Square Edge <input type="checkbox"/> 10/10 <input type="checkbox"/> Square</p>				
<table border="1" style="width:100%; border-collapse: collapse;"> <tr> <td style="width:15%;">LEGEND</td> <td style="width:15%;">// = Rolled</td> <td style="width:15%;">X = Square Lam</td> <td style="width:55%;">*Mason Mitres to be marked *</td> </tr> </table>	LEGEND	// = Rolled	X = Square Lam	*Mason Mitres to be marked *	
LEGEND	// = Rolled	X = Square Lam	*Mason Mitres to be marked *		





Ph: 07 3865 7056

Fax: 07 3865 7551

E: sales@shapesupplies.com.au

W: www.shapesupplies.com.au

Cabinets / Carcasses Quote Form (Form 2)

Customer Name:		Date Ordered:	
Ordered By:		Signature:	

Cabinet Name	Cabinet #	Hgt	Wth	Dpt	Corner Units		Fabrication Details			Extras	
					Wth2	Dpt2	Hinges (L,R,Pair)	Shelves (Qty – Adj Fixed)	Other Notes	Doors & Draw front (yes/no – board detail)	Hardware (yes/no)

- Sink units come with vertical rail (60mm)
- Standard base and draw units come with horizontal rail (100m)
- Handles – Sold Separately

